

# DINO<sup>®</sup> 180 XT



**DINO Lift<sup>®</sup>**

*Get Lifted<sup>™</sup>*

**XT-SERIES**

# DINO<sup>®</sup> 180 XT



**Long horizontal outreach with strong articulating boom**  
 – ensures safe access with “up and over” capability.

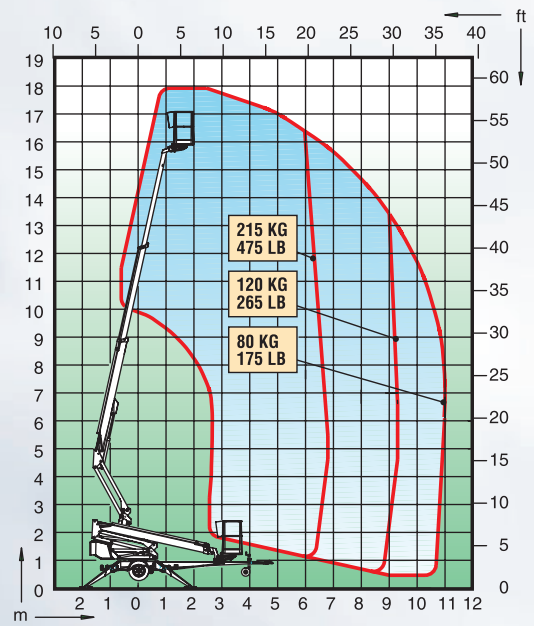


**Petrol or diesel power pack as an option**  
 – power for lift also without mains.



**Driving system is standard**  
 – easy to move around on site.

## Technical specification



Max. working height	18.0 m	59'
Max. platform height	16.0 m	52'5"
Max. outreach	10.9 m	35'10"
Support width	3.8 m	12'6"
Lifting capacity	215 kg	475 lb
Basket size	0.7x1.3m	2'4" x 4'3"
Boom rotation	cont.	cont.
Basket rotation	90°	90°
Boom control	proport.	proport.
Transport length	6.57 m	21'7"
Transport width	1.80 m	5'11"
Transport height	2.29 m	7'6"
Weight	2100 kg	4630 lb
Driving system	std	std
AC-socket in the basket	std	std
Electro motor	std	std
Petrol power pack	opt.	opt.
Diesel power pack	opt.	opt.
Gradeability	25%	25%

The specification is subject to change without notice.

XT-series DINOs are strong and versatile trailer-mounted platforms.

Articulating boom with telescopic top section and proportional steering, ensure stable access to the most demanding work position, even over obstacles and in confined areas.

Thanks to the articulated boom the basket can be moved 2,5 metres vertically.



Dinolift Oy • Raikkolantie 145  
 FI-32210 Loimaa • Finland

Tel +358-2-76 25 900  
 Fax +358-2-76 27 160  
 Internet [www.dinolift.com](http://www.dinolift.com)